

COLORADO

luxe.

interiors + design®



\$ 9.95

A SANDOW PUBLICATION

33>



0 09281 03220 5
VOLUME 11, ISSUE 3 | DISPLAY UNTIL 10/14/13



ALPINE EDGE

WHEN CONTEMPORARY FORMS MEET ICONIC WESTERN MATERIALS, A FAMILY'S VAIL VALLEY RESIDENCE EMERGES WITH A FRESH TAKE ON MOUNTAIN STYLE.

WRITTEN BY MINDY PANTIEL PHOTOGRAPHY BY KIMBERLY GAVIN

INTERIOR DESIGN Eddy Doumas, Worth Interiors | ARCHITECTURE Eric Johnson, Eric Johnson Architect, P.C.

HOME BUILDER Bruce Fraser, Fraser Construction LLC and Robert Kehr, Kehr Construction Group, LLC

LANDSCAPE ARCHITECTURE Rodger Hatfield, Earth Management Solutions

BEDROOMS 6 | BATHROOMS 9 | SQUARE FEET 9,300



In the spacious living room of a Vail Valley home, designer Eddy Dumas chose tactile materials that complement the wall's stone detailing. A cowhide rug from Stark grounds a sitting area where a leather-covered Dunne daybed by Troscan Design + Furnishings pairs with a custom tufted ottoman.

Watching the sunrise on the mountains from our living room window is so spectacular, it's like being on another planet," says Tammy Di Leo, who along with her husband, Max, purchased a classic alpine home so perfectly situated that they can stand on their terrace and watch the skiers come down the slopes at Beaver Creek. In addition to enviable vistas, the Florida couple, who routinely visits Vail Valley with their three children, also enjoy the generous proportions of the rambling house previously remodeled by architect Eric Johnson.

"We salvaged a lot of the original building's structural materials, popped it up and out in every direction and nearly doubled the square footage," says Johnson, who also added more than 2,000 square feet of outdoor living areas. And according to builder Robert Kehr, those commodious rooms and outdoor spaces made a dramatic difference. "The house has three large suites all with spa bathrooms, and the master has a personal deck with a privacy fence and hot tub," he says.



Above: A cozy sitting area in the living room includes an Edward Ferrell + Lewis Mittman sofa and a Barbara Barry chair from Baker, both upholstered with Romo fabric. Right: A classic Milo Baughman chair, from Thayer Coggin, offers additional seating.



CONTINUED FROM PAGE 231

Although the dry stack limestone and rustic Douglas fir exteriors mesh seamlessly with the mountain backdrop, when it came to the interior design, the Di Leos longed for a more contemporary statement. "The house had a lot of dark wood and we wanted something lighter, brighter and more in keeping with who we are," says Tammy, who selected designer Eddy Doumas to help make the transition.

"They really wanted to push the envelope and go as contemporary as possible within the confines of the existing architecture," says Doumas, who kick-started the process by introducing an array of new wall and ceiling finishes. "To get that edge, you have to break the rules



Clean lines define the Ted Boerner dining table, purchased through Town, and Jiun Ho chairs, which are covered with durable Joseph Noble Great Fake leather. A Roll & Hill chandelier composed of 12 ceramic antlers lends a whimsical western accent.



Doumas gave the kitchen a contemporary feel by painting the island cabinetry black to play off the existing granite countertop and redid the perimeter counters in honed black granite. The Guy Chaddock hand-forged iron chandelier, which features natural burlap and leather lacing, was procured through Town.

CONTINUED FROM PAGE 232

and mix it up. That meant doing things like playing off the dark wood with everything from embroidered vinyl in the guest room to grass cloth with an unexpected silver metallic sheen in the living room."

Also unexpected is the repeated use of cowhide that Doumas deftly employed with a modern twist. The living room is grounded with a patchwork cowhide rug, alder panels in the master suite's sitting area were stained dark and fitted with brown cowhide inlays, and the bed is backed with white paneling filled with ivory cowhide. "When you go contemporary, you still have to be respectful of the location and the architecture," Doumas says of his innovative use of the iconic western material. "It also helps to have clients who are brave enough to try layers of dark and light woods, plaster, grass cloth and cowhide."



CONTINUED FROM PAGE 235

To recreate some of the interior finishes, including the living room's soaring 26-foot-tall ceiling, Doumas worked with builder Bruce Fraser, who replaced the existing dark alder wood with a wire-brushed white oak prepared in an oil- and paint-rubbed finish that resembles driftwood. "The posts and beams were given depth by adding a glaze and then finished with a flat sheen lacquer," explains Fraser.

For furniture and accessory choices, Doumas once again mixed, matched and remained mindful of the local vernacular. In the living room, the modern profile of a high-back daybed is tempered with a rich caramel-colored leather (another subtle nod to the West); a Danish modern coffee table is paired with an English-style sofa marked by

In the game room, tufted patent-leather vinyl wraps around a bar, which is crowned with a glowing Caesarstone top from the Concetto Collection. Benches and bar stools from Four Hands offer comfortable seating.



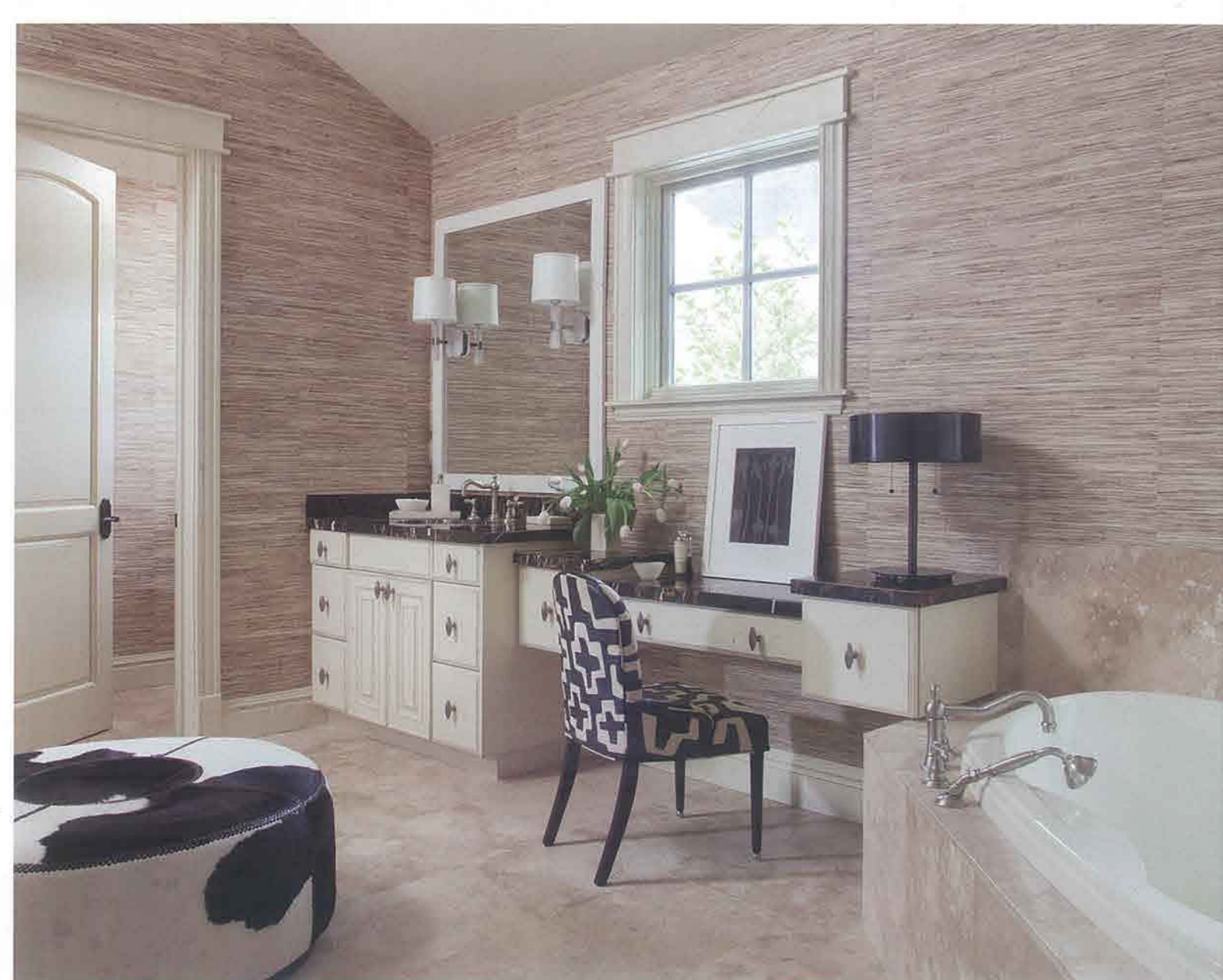
The master suite's sitting area is outfitted with a Kennedy sectional sofa by Edward Ferrell + Lewis Mittman and a sturdy coffee table from Taracea. The Stark ikat rug, from Town, lends a punch of color and pattern to the space.



In the master bedroom, the headboard is upholstered with Joseph Noble fabric and stands against a wall custom paneled with hide, chrome and lacquer. The custom table is by Altura Furniture, and the Antoine Proulx chair combines a wood-and-copper frame with a metallic from Edelman Leather.



A lamp from Ralph Pucci International lights the Milo Baughman chairs and ottoman from Thayer Coggin that flank the master bedroom's antique limestone fireplace. The linen drapes feature the same Romo fabric in two colors.



CONTINUED FROM PAGE 236

a traditional scalloped edge in the game room; and simple custom wrought-iron chandeliers quietly evoke wagon wheels. "It was my job to help the owners meet their goals for a contemporary look, while fashioning spaces appropriate to the setting," says Doumas.

To further enhance the setting, landscape designer Rodger Hatfield removed existing junipers and replaced them with flowering shrubs to create a welcoming palette of pastel colors. He also moved 10 aspen trees, which were impeding the view from the back patio, and put in a low shrub bed. "Now when the Di Leos look out," says Hatfield, "they see nothing but quiet blooms in the foreground and the majestic mountains beyond." **L**

In the second master bath, an alder vanity topped with dark marble is paired with a chair from Arteriors Home. Crystal sconces by Barbara Barry for Kallista illuminate the Phillip Jeffries grass-cloth wallcovering. The cowhide ottoman is from Doumas Vail shop, Worth Home.